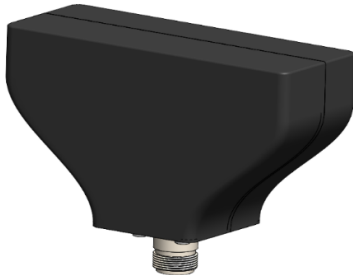


Covert Wideband Antenna from 600MHz to 2700MHz

WB627D

The WB627D is a wideband and compact antenna designed for vehicular environment operating on LTE bands from 600 MHz to 2700 MHz. The antenna is designed for easy integration i.e. to roof rails and is therefore well suited for applications requiring discreet installation like electronic surveillance (ISR) and VIP-protection (ECM, C-IED).

- Designed for covert installations
- Excellent performance over the entire frequency range
- High power rating, 200W at 100% duty cycle



Product Details	
Frequency range	600-2700 MHz on a ground plane ($\geq 1 \times 1 \text{ m}^2$)
Polarization	Nominally vertical
Radiation pattern	Omnidirectional
Gain	Patterns available on request
VSWR	≤ 3.0
Nominal Impedance	50 Ω
Power rating	200 W (RMS)
Standard color	Black
Radiator	Radome protected
Height	60 mm
Width	122 mm
Depth	44 mm
Weight	200 g

Installation*	
RF connection	Female N-type
Mounting	4-hole M6 mount

*Specific adjustments on request

Order number	NSN	Product
WB627D	-	Antenna as described above