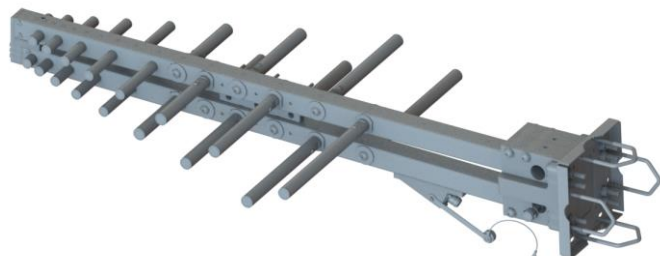


Wideband Active Log Periodic Dipole Array

400 – 1000 MHz

Product Code: LPDA-A0176

VERSION: 1.2



*Picture is indicative only; final design might be different.

SPECIFICATIONS:

Frequency range	400 – 1000 MHz
VSWR	< 2.0:1
Feed power handling	Receive only
Nominal input impedance	50 Ω
Connector	N-type female
Gain	
Passive mode	> 6 dBi (typically)
Active mode	> 15 dBi (typically)
E-plane 3 dB beamwidth	45° - 60° typical
H-plane 3 dB beamwidth	90° - 100° typical
Polarisation	Linear (vertical or horizontal)
Power supply	12 - 18 V DC via RF input
Power consumption	< 3W
Mechanical:	
Dimensions (l x w)	1000 mm x 510 mm
Weight	5 kg
Material	Aluminium, stainless steel
Mounting method	Bracket for 50 mm – 100 mm poles
Environmental: designed to meet the following specifications	
Operating Temperature	-31 to 71 °C
Storage Temperature	-40 to 71 °C
Wind speed	160 km/h

PRODUCT FEATURES:

- High gain
- Active antenna
- Low and stable VSWR
- Vertical or horizontal polarisation
- Wide frequency range
- Suitable for maritime applications
- Balanced feed point

PRODUCT DESCRIPTION:

The LPDA-A0176 is an active directional log-periodic dipole array with built in low noise amplifier, primarily designed for EW monitoring applications. It covers the 400 – 1000 MHz frequency band with a typical gain of greater than 15 dBi when in active mode.

The LPDA-A0176 is designed to be lightweight and compact which makes it ideal for tactical use.